

INSTRUMENT APPROACH CHART

**AERODROME ELEV 435
HEIGHTS RELATED TO
THR RWY 11 - ELEV 435**



EAST LONDON

(Cat A - D)

VOR Rwy 11

FAEL

BEARINGS ARE MAGNETIC
ALTITUDES, ELEVATIONS
AND HEIGHTS IN FEET.
DISTANCES IN NM.

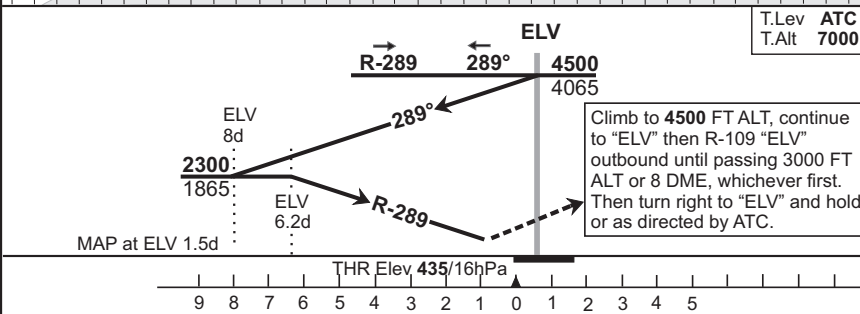
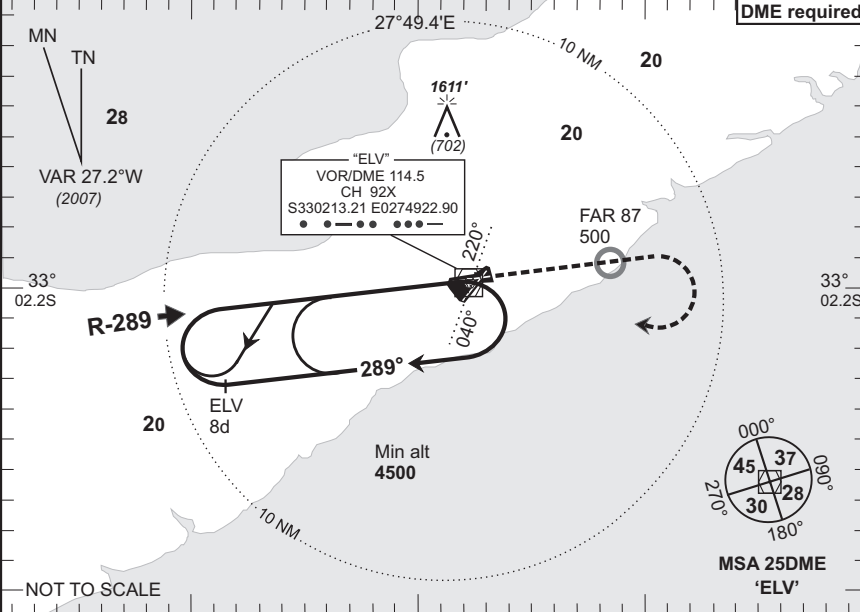
**EAST LONDON Approach
120.1**

**Tower
118.3**

**Apron
122.65**

**ATIS
126.65**

**VOR-01
EFF
03 Jul 08**



1. Initial approach altitude **4500** or higher MSA.
2. Procedure turn approach applicable only within 30° of the outbound heading. Use phraseology "Request procedure turn approach".
3. RoD computes at 3° angle of descent.
4. Circle to land at the discretion of the pilot in command.

OCA/H					"ELV" 6.2d - THR						
Cat of ACFT	A	B	C	D	Speed	Kt	80	100	120	140	160
Straight	1120(685)	1120(685)	1120(685)	1120(685)	Time	M:s	4:14	3:24	2:49	2:25	2:07
-in					Rate of Descent	Fpm	420	530	640	740	850
Approach					"ELV" VOR/DME	6.2d	5d	4d	3d		
Circling					Advisory Alt/Hgt	2300(1865)	1900(1465)	1580(1145)	1260(825)		

Rev: VAR & FAD-190 Removed WGS-84